

## Production Manager

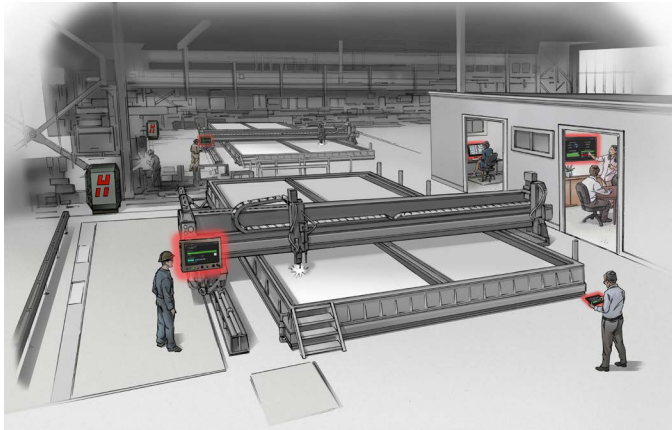
ProNest® optional module

### Benefits:

- Better productivity
- Maximized machine up-time
- Better on time delivery
- Increased material utilization

### About

No more guessing what's happening out on the shop floor. Production Manager provides you with a dashboard showing the current status of each cutting machine at your facility and details for each nest / job that you produce. It tracks job progress, alerts you to stoppages, and provides valuable insights into your overall cutting performance.



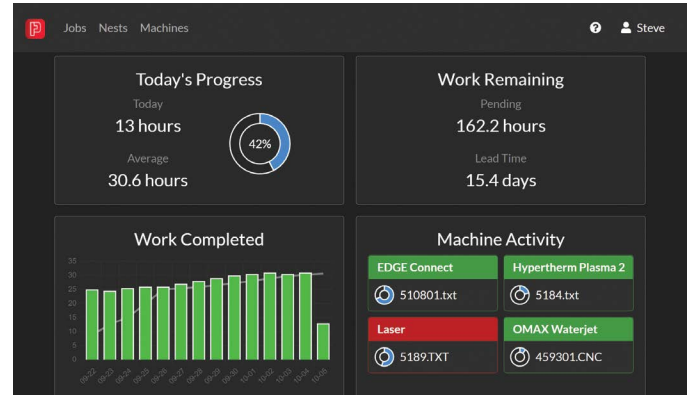
### How it works

Production Manager is a web application that runs from any PC or mobile device web browser that's connected to your internal company network.

First, Production Manager collects data from ProNest as nests are output for cutting. These nests are then displayed in Production Manager, allowing visibility to the rest of the organization, and marked with a "pending" status while they await production with the specified machine.

During this time, users throughout the organization can view nest details including an image of the nest, and if necessary, make changes prior to cutting:

- Production team members may need to cancel an order, put it on hold, or send it back to the nesting programmer to add or remove parts based on last-minute changes. They can



also view machine backlogs to ensure loads are balanced across cutting machines to keep production running smoothly.

- Nesting programmers may need to review nests for available space to accommodate a high priority order, find opportunities for improvement such as adding filler parts, or combine orders for greater plate utilization.

Next, when a machine operator starts cutting a new job, they'll be able to use the Production Manager web application (accessed from any PC or mobile device) to log start, stop, and complete times for the job.

As machine activity is logged, Production Manager provides real-time status updates to the rest of the organization:

- Production team members can see if a machine has stopped cutting, or how much time is left on a particular job.
- The inventory team can see how much plate is pending, and is able to swap inventory out when the original inventory is not available.
- The sales team can access the estimated lead times for each machine for improved quoting and estimating.
- Customer service can check the production status for specific parts, work orders, or customers.
- Management can view the day's progress, track productivity versus daily average, and spot problems as they arise.

Finally, when the job is marked complete, all activity is updated in Production Manager, including machine status and nest status. ProNest's Plate Inventory module is updated to reflect consumed plates and new remnants created. ERP/MRP integration is also supported, giving you complete, end-to-end traceability for every part that you produce.

## Standard feature highlights

- Dashboard view including:
  - Overview of jobs/nests created daily
  - Current status of machine(s)
  - Production completed today
  - In-production daily average
  - Production backlog daily average
  - Daily production time for each machine
- Search tool including:
  - Find nest / job containing search criteria
  - List all nests associated with a job
  - List all plate inventory names, heat numbers, etc., associated with a nest
  - List all work orders in a job
- Plate inventory marked as consumed, new remnants made available in database\*
- Changes to plate inventory made on the shop floor are automatically updated in the database\*
- Pending nest inventory requirements versus stock on hand
- Supports ERP/MRP integration with ability to mark work order parts as cut\*

\*Requires optional module



In addition, for owners of the Hypertherm EDGE® Connect CNC, machine data can be captured automatically as Production Manager supports a direct connection to the CNC. This provides verified machine cut times, cutting amperage, and consumables used with no need for operator intervention.

Visit our website [www.hypertherm.com/CAM](http://www.hypertherm.com/CAM) to request a free production trial.

Hypertherm, ProNest, EDGE, and Shaping Possibility are trademarks of Hypertherm, Inc. and may be registered in the United States and/or other countries. All other trademarks are the property of their respective owners.

Please visit [www.hypertherm.com/patents](http://www.hypertherm.com/patents) for more details about Hypertherm patent numbers and types.

© 11/2021 Hypertherm, Inc. Revision 0  
898180

As 100% Associate-owners, we are all focused on delivering a superior customer experience. [www.hypertherm.com/ownership](http://www.hypertherm.com/ownership)

Environmental stewardship is one of Hypertherm's core values. [www.hypertherm.com/environment](http://www.hypertherm.com/environment)

**Hypertherm**<sup>®</sup>  
SHAPING POSSIBILITY<sup>®</sup>

100% Associate-owned

